



INVITAE

Genetic testing  
for hereditary cancer

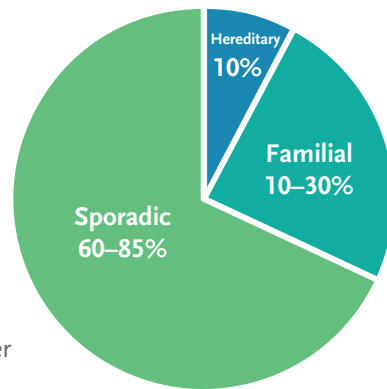
## THE GENETICS OF HEREDITARY CANCER

About half of all men and one-third of all women in the US will develop cancer during their lifetimes.

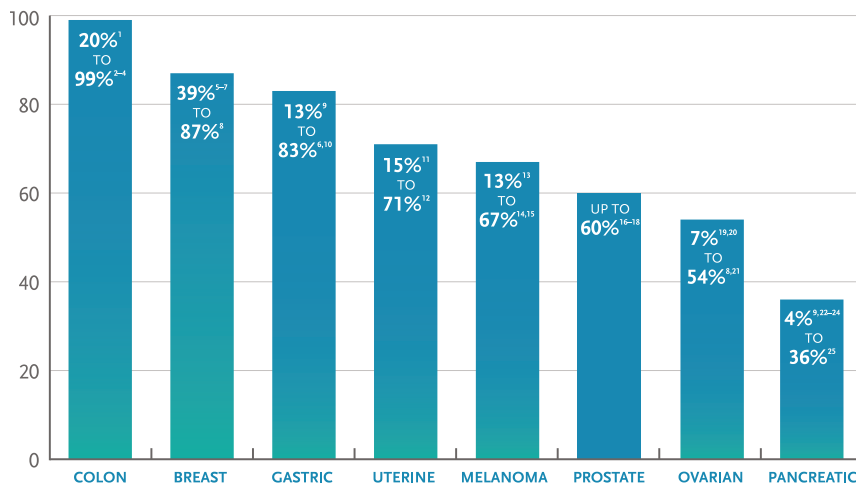
**Approximately 5% to 10% of all cancers are hereditary.** An additional 10% to 30% have a close family member who also had cancer, suggesting a familial link even though no specific hereditary link was found. And 60% to 85% of cancer patients have what's called sporadic cancer, meaning the cancer does not seem connected to inherited genetic traits, or is the result of many different factors.

In **hereditary cancer**, an increased risk of developing certain cancers is passed down through families via their genes.

The past few decades have seen incredible advances in genetic knowledge, and we have now identified many genes associated with cancer. If you have an alteration in one of these genes, your risk of developing certain types of cancer is significantly higher than that of the general population.



## LIFETIME CANCER RISK FOR PEOPLE WITH A GENETIC ALTERATION



## WHO SHOULD CONSIDER GENETIC TESTING?

Genetic testing may be appropriate if you have:

- Breast, colorectal, or uterine cancer diagnosed **before age 50**
- More than one type** of cancer
- Cancer in both of a **set of paired organs** (for example, both kidneys or both breasts)
- Certain types of cancer** including ovarian, metastatic prostate, triple-negative breast or male breast cancer, or 10+ gastrointestinal polyps)
- Two or more diagnoses** of cancer on the same side of your family

Your healthcare provider may have additional criteria for determining whether testing is right for you.

## WHAT ARE THE BENEFITS OF GENETIC TESTING?

Knowing if you have an inherited risk empowers you to be proactive about your health.



Increased surveillance can identify a cancer at its earliest, most treatable stage.



Certain medicines can prevent cancer from developing (“chemoprevention”).



If desired, surgery can significantly reduce risk.



Genetic information can qualify you for participation in clinical trials or research studies.

BASED ON YOUR SPECIFIC MEDICAL HISTORY AND INFORMATION ABOUT FAMILY MEMBERS DIAGNOSED WITH CANCER, YOU AND YOUR HEALTHCARE PROVIDER MIGHT CHOOSE ONE OF THESE GENETIC TESTS—OR PERSONALIZE ONE OF THESE TESTS FOR YOUR UNIQUE SITUATION.

		GENES	BREAST & GYN	ENDOCRINE	GASTROINTESTINAL	GENITOURINARY	HEMATOLOGIC	NERVOUS SYSTEM/BRAIN	PROSTATE	SARCOMA	SKIN	
INVITAE COMMON HEREDITARY CANCERS PANEL	INVITAE BREAST GUIDELINES-BASED PANEL	ATM	■		■		■		■			
		BRCA1	■		■	■			■			
		BRCA2	■		■	■			■		■	
		CDH1	■		■							
		CHEK2	■	■	■	■			■			
		PALB2	■		■				■			
		PTEN	■	■	■	■		■			■	
		STK11	■		■							
		TP53	■	■	■	■	■	■	■	■	■	■
		NBN	■				■	■		■	■	
		NF1	■	■	■	■		■	■		■	
		APC			■	■			■		■	
		AXIN2				■						
		BARD1	■									
	BMPR1A				■							
	BRIP1	■										
	CDK4										■	
	CDKN2A				■						■	
	CTNNA1				■							
	DICER1	■	■			■		■		■		
	EPCAM	■			■	■	■	■	■	■		
	GREM1				■							
	HOXB13								■			
	KIT				■					■		
	MEN1			■	■			■				
	MLH1	■			■	■	■	■	■	■		
	MSH2	■			■	■	■	■	■	■		
	MSH3				■							
MSH6	■			■	■	■	■	■	■			
MUTYH				■								
NTHL1				■								
PDGFRA				■					■			
PMS2	■			■	■	■	■	■	■			
POLD1				■								
POLE				■								
RAD50	■											
RAD51C	■											
RAD51D	■							■				
SDHA			■	■					■			
SDHB			■	■	■				■			
SDHC			■	■	■				■			
SDHD			■	■					■			
SMAD4				■								
SMARCA4	■						■					
TSC1				■	■		■					
TSC2				■	■		■					
VHL			■	■	■		■					

## WHAT CAN GENETIC TESTING TELL ME?



### A POSITIVE TEST RESULT CAN:

- Pinpoint your risk of developing cancer, enabling you to make informed medical decisions to reduce risk
- Provide an explanation for your personal or family history of cancer
- Identify other at-risk relatives for whom genetic testing is recommended



### A NEGATIVE TEST RESULT:

- Means that you do not have an alteration in the genes tested
- Your overall cancer risk depends on your medical history, family history, and environment



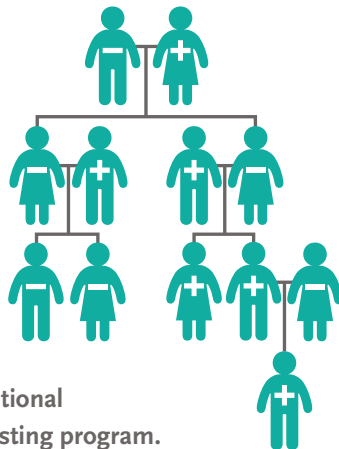
### AN UNCERTAIN VARIANT TEST RESULT:

- Means that an alteration was identified, but it is not currently known if that alteration increases risk
- Should not be used to guide your medical care
- Invitae will update your doctor if new information becomes available

## WHAT CAN GENETIC TESTING DO FOR MY FAMILY?

Identifying at-risk family members is one of the most important benefits of genetic testing. If you have a genetic alteration, your immediate family members could have a 50% chance of having the same alteration. Other relatives may also be at risk.

Invitae is dedicated to ensuring that both you and your family know your risk. **If you receive a positive test result from Invitae, we will test your blood relatives for that same alteration at no additional charge within 90 days under our family variant testing program.** Learn more at [www.invitae.com/patients/family-testing](http://www.invitae.com/patients/family-testing).



## NEXT STEPS

- Submit a saliva or blood sample for testing.
  - Your sample was submitted on \_\_\_\_\_
- After receiving your sample, Invitae will send results to your doctor within 10–21 calendar days for standard orders and 5–12 calendar days for STAT panels.
- Learn more about genetic testing, including potential results and suggestions for how to talk with your family, at [www.invitae.com/patients](http://www.invitae.com/patients).

## HAVE QUESTIONS? TALK WITH A GENETIC COUNSELOR

- If you're not working with one, Invitae can help you find a local genetic counselor. Our experienced, board-certified genetic counselors are also available by telephone to answer your questions. Simply call 800-436-3037 and ask to speak with a genetic counselor.
- Invitae also offers a comprehensive post-test genetic counseling session at no additional charge. During this session, our experienced genetic counselors will review your personal and family medical history, and discuss what your genetic test results mean for you and your family. To schedule a post-test genetic counseling session, please call 800-436-3037.

## ABOUT INVITAE

Invitae is a different type of genetic testing lab. Our mission is to bring genetic information into doctors' offices around the world to improve the quality of healthcare.

To do that, we're dedicated to making genetic testing affordable and accessible:

- Invitae bills insurance less than most other labs, which means a lower out-of-pocket cost for you.
- Most patients pay less than \$100 out of pocket for an Invitae test.
- Invitae works with all insurance companies, including Medicare and Medicaid.
- If you don't have insurance or your insurance company charges you more than \$100, Invitae offers payment options and a financial assistance program. Call us at 800-436-3037.



INVITAE

1. Senter L, *Gastroenterology*. 2008
2. Neklason DW, *Clin Gastroenterol Hepatol*. 2008
3. Half E, *Orphanet J Rare Dis*. 2009
4. Petersen GM, *Gastroenterology*. 1991
5. Cybulski C, *J Clin Oncol*. 2011
6. van der Post RS, *J Med Genet*. 2015
7. Antoniou AC, *N Engl J Med*. 2014
8. Ford D, *Lancet*. 1994
9. Giardiello FM, *Am J Gastroenterol*. 2014
10. Fitzgerald RC, *J Med Genet*. 2010
11. Goodenberger ML, *Genet Med*. 2016
12. Baglietto L, *J Natl Cancer Inst*. 2010
13. Rai K, *Clin Genet*. 2016
14. Bishop DT, *J Natl Cancer Inst*. 2002
15. Begg CB, *J Natl Cancer Inst*. 2005
16. MacLinnis RJ, *PLoS One*. 2013
17. Kote-Jarai Z, *Ann Oncol*. 2015
18. Karlsson R, *Eur Urol*. 2014
19. Thompson ER, *PLoS One*. 2013
20. Song H, *J Clin Oncol*. 2015
21. Antoniou A, *Am J Hum Genet*. 2003
22. Iqbal J, *Br J Cancer*. 2012
23. Moran A, *Fam Cancer*. 2012
24. Stadler ZK, *Cancer*. 2012
25. van Lier MG, *Am J Gastroenterol*. 2010